

\$1.04

2018-19 M&O TAX RATE Amount Lewisville ISD taxpayers pay for schools per \$100 of their home's property value.

WHERE THE MONEY COMES FROM

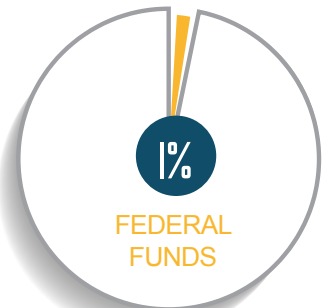
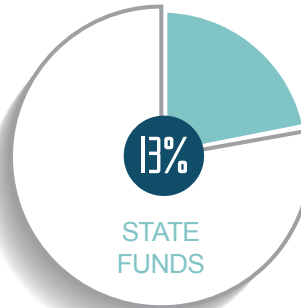
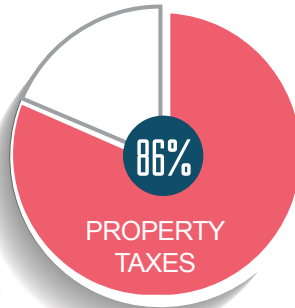
TOTAL REVENUE: \$489,981,920

Fiscal year 2018-19 Adopted Budget

Property taxes: \$418,985,588

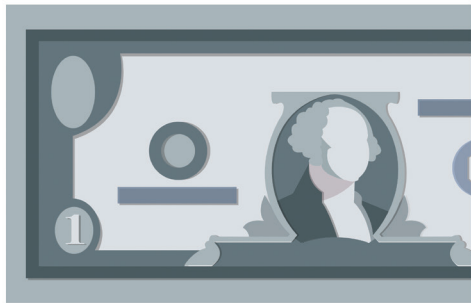
State funds: \$64,797,332

Federal funds: \$6,199,000



HOW EACH DOLLAR IS SPENT IN LEWISVILLE ISD

TEACHERS AND SCHOOL STAFF **\$.71**



\$.09
BUILDING OPERATIONS

\$.07
RECAPTURE PAYMENTS



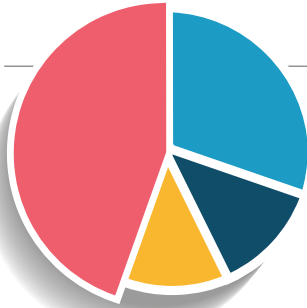
\$.03
TRANSPORTATION

\$.05
ADMINISTRATION

\$.02
HEALTH AND SUPPORT

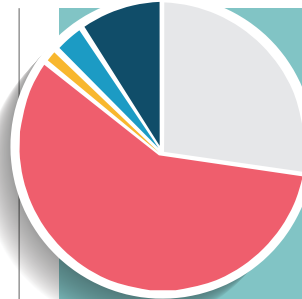
\$.01
TAX APPRAISAL AND COLLECTION

\$.02
TECHNOLOGY



52,109
TOTAL LISD STUDENTS

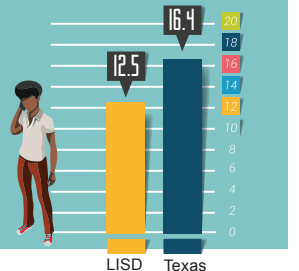
Percent of at-risk students **35%**
Percent considered low-income **32.4%**
Career and technical ed students **18.1%**
ESL/bilingual student population **17.4%**
Gifted and talent population **10.8%**
Percent enrolled in special ed **10.4%**



TEACHER RETENTION

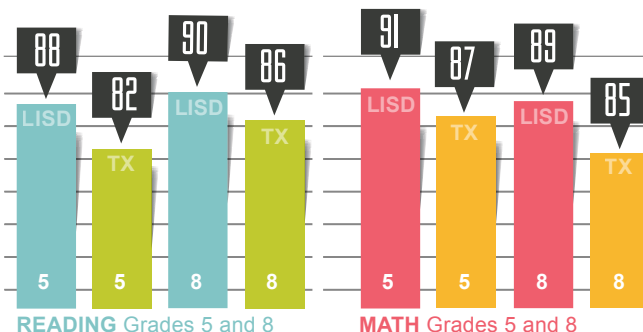
Percent of teachers who leave LISD every year as compared to other districts in Texas

Texas Academic Performance Reports



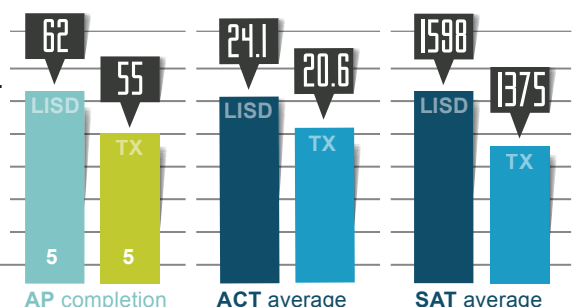
STUDENT TEST SCORES

Texas Academic Performance Reports 2016-17



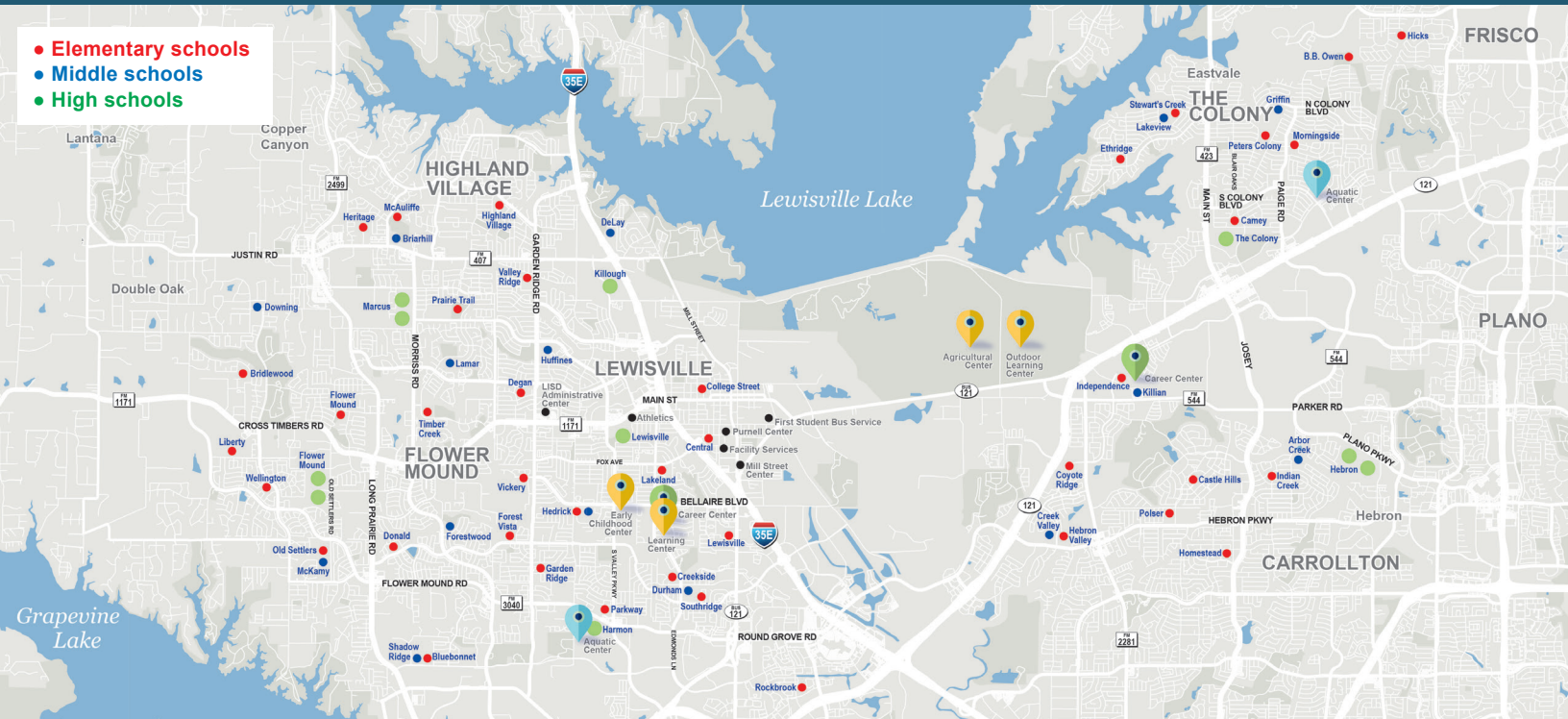
HIGH SCHOOL

Advanced Placement Dual Credit course completion rates





Lewisville Independent School District serves 13 municipalities and spans 127 square miles in southern Denton County. More than 51,000 students attend classes in LISD schools. Those include 40 elementary schools, 15 middle schools, and five 9th and 9th-10th grade campuses that serve five main high schools. The district offers career and technical education through two learning centers, programs for young children at its preschool learning center and special education programs at another learning center.



Vision

All of our students enjoy thriving, productive lives in a future they create.

Mission

Students, staff and community design and implement a learning organization that provides engaging, innovative experiences every day.

Beliefs

We believe:

- Every student is uniquely capable and deserves to be challenged each day.
- Uninhibited learning depends on a safe, nurturing, inclusive and flexible environment.
- An educated citizenry is essential for equal opportunity and a prosperous society.
- Meaningful and relevant work engages students in profound learning.
- Critical thinking and problem solving today are necessary for students to be equipped for future challenges.
- Genuine transformation requires disruptive innovation.
- Education is the shared responsibility of the community.



LISD Cornerstone

Four principals drive every aspect of Lewisville ISD.

1. Student learning becomes meaningful and relevant when it is collaborative and experiential.
2. Student experience means keeping them engaged in their learning through exposure to real world challenges.
3. Community engagement forges relationships critical to our schools and the vibrant communities we serve.
4. Resource stewardship challenges us to maximize every day use of our time, talents and treasures.