

Old Settlers Elementary School

Campus Profile

SCHOOL HOURS ONLINE

7:45 a.m. to 3 p.m. **GRADES** Kindergarten through 5th grade
lisd.net/oldsettlers | facebook.com/oldsettlerses | x.com/OldSettlersES

STUDENT INFORMATION

472 Students
95.6% Average daily attendance

STAFF INFORMATION

51.53 Total staff members
14.5 Average number of years teaching experience
10.0 Average number of years teaching in LISD schools

PROFESSIONAL LEARNING

Total number of hours the staff spent developing their job skills last year

3038

50.6

Average professional learning hours per Lewisville ISD staff member



OBSERVATION

180

Number of administrator visits to observe class instruction

90 Average number of classroom visits per administrator

Our commitment to students:

At Old Settlers Elementary, we are proud to be the start of a child's education as we prepare them for their journey to college and career readiness. The OSE staff is devoted to academic achievement while developing strong student/teacher relationships based on our OSE Core Values:

S – Spirit of Gratitude
T – Treasured Relationships
A – Academic Achievement
R – Respectful Communication
S – Supportive Community

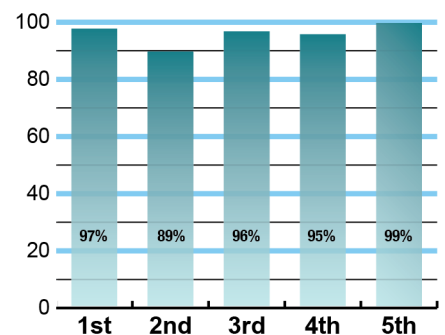
Our successes are a result of boundless positive energy, genuine dedication, and an amazing commitment toward teaching and learning from the Old Settlers students, staff, parents and community.

We acknowledge our responsibility to nurture and develop each individual child so they acquire the essential skills needed to solve real-world problems while working collaboratively in a rapidly changing and diverse world.

ACADEMIC PERFORMANCE

Istation by grade level

Lewisville ISD monitors students' reading progress through the Istation computer program. Teachers can quickly assess which students need help. This chart shows the percent of students reading on grade level or showing six months growth at the end of the school year.



CLUBS

Clubs provide opportunities for students to engage in learning of their choice beyond the classroom.

Some of ours include Student Council, Giving Tree (Community Service Club), Newscasters, Morning Greeters, Kindness Ambassadors, Choir, Art Club, and Future Music Learning Masters.

DIGITAL CITIZENSHIP

Earning the Common Sense School badge is a symbol of our school's dedication and commitment to helping students think critically and use technology responsibly to learn, create, and participate.



PROGRAMS

Our campus offers unique programs to help our students grow.

Some of our programs include WIN Time/Shine Time, STAR Stories, Student of the Month, Watch Dogs, and Jump Rope for Heart.

ARTS AND ATHLETICS

100%

Participation in athletics or physical education

100%

Participation in fine arts such as music and art

AWARDS AND RECOGNITIONS

- TEPSA Student Leadership Award 2017-2018
- ENERGY STAR certified school
- Multiple LEF teacher and campus grant awards
- Home of the First Monarch Way Station in Flower Mound

Survey said...



What our parents think

In April 2024, parents were surveyed about the campus their child attends. Values represent the percentage of respondents who agreed with each statement. Based on 185 responses.

Are satisfied overall	97%
Most of the time, my child is happy at school	96%
My child's health and wellness are supported	98%
Parents feel welcomed at school and are involved	95%
School staff communicates well with families	95%
Teachers do whatever it takes to help my child meet academic standards	99%

What our students think

In April 2024, we asked 4th and 5th grade students about adults they could confide in at our school. Values represent the percentage of students who agreed with the following.

There is a staff member at my school with whom I feel comfortable talking	90%
---	-----



OLD SETTLERS ELEMENTARY SCHOOL

Home of the Stars
Flower Mound, Texas

Dr. Kelly Hayunga, Principal

