

McKamy Middle School

Campus Profile

SCHOOL HOURS ONLINE

8:55 a.m. to 4:10 p.m. **GRADES** 6th through 8th grade

lisd.net/mckamy | facebook.com/mckamyms | x.com/McKamyMS | instagram.com/mckamy_ms

STUDENT INFORMATION

825 Students
96.6% Average daily attendance

STAFF INFORMATION

61.38 Total staff members
15.5 Average number of years teaching experience
11.7 Average number of years teaching in LISD schools

PROFESSIONAL LEARNING

Total number of hours the staff spent developing their job skills last year

3216

42.9

Average professional learning hours per Lewisville ISD staff member



OBSERVATION

Number of administrator visits to observe class instruction

532

177 Average number of classroom visits per administrator

At McKamy Middle School, we believe in:

- Learning in partnership with our community
- Nurturing the intellectual, social and emotional growth of one another

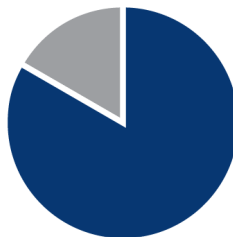
Our passion is to empower courageous and compassionate learners who embrace challenge and innovation, think critically and reflectively, value diverse collaboration, and conscientiously care for the world they create.



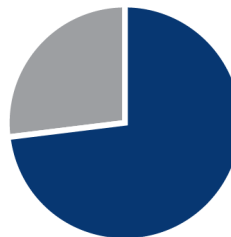
ACADEMIC PERFORMANCE

PSAT SCORES AND ADVANCED COURSES

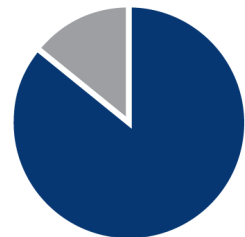
- = Percent of students whose PSAT test scores indicate they are college and career ready.
- = Percent of student population who are enrolled in at least one advanced course.



PSAT Reading **83.6%**



PSAT Math **73.2%**



Honors/AP enrolled **86%**

CLUBS

Clubs provide opportunities for students to learn beyond the classroom. Some of our clubs include National Junior Honor Society, Chess Club, Principal Advisory Committee, Student Council, FCA, Yoga, Drawing Club, Improv Club, Music Heals, Hooked on Yarn, and Literature Club.

DIGITAL CITIZENSHIP

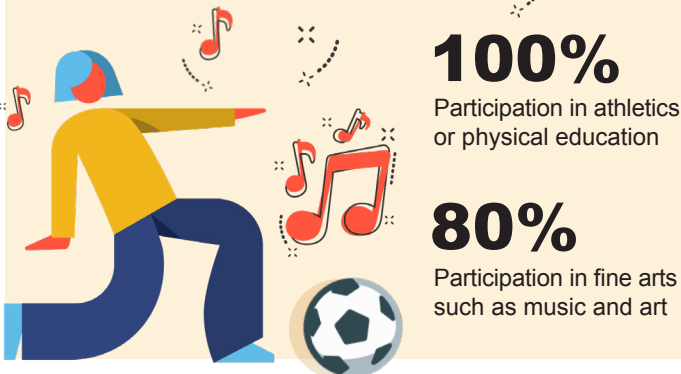
Earning the Common Sense School badge is a symbol of our school's dedication and commitment to helping students think critically and use technology responsibly to learn, create, and participate.



PROGRAMS

UIL Academics Competition, Athletics, Band, Choir, Orchestra, Game of Life Simulation, Culturally U-Knighted Event, Project-Based Learning with expert advisors, Yearbook, School Newspaper, Pom Squad, and MathCounts

ARTS AND ATHLETICS



AWARDS AND RECOGNITIONS

- National PTA School of Excellence
- Best of Denton County Public Middle School
- Best Public Middle School Principal
- Best Public Middle School Teacher
- CREST Award
- No Place for Hate Campus
- National Spelling Bee Champion
- Academic UIL grade level winners
- Ron and Marilyn Allee Cup Winner (three years)
- UIL sweepstakes honors for choir, band and orchestra
- Destination Imagination National Finalist
- Texas PTA Reflections Finalist
- TSA/Vex National Award winners

Survey said...



What our parents think

In April 2024, parents were surveyed about the campus their child attends. Values represent the percentage of respondents who agreed with each statement. Based on 288 responses.

Are satisfied overall	97%
Most of the time, my child is happy at school	94%
My child's health and wellness are supported	97%
Parents feel welcomed at school and are involved	99%
School staff communicates well with families	96%
Teachers do whatever it takes to help my child meet academic standards	92%

What our students think

In April 2024, we asked our students about adults they could confide in at our school. Values represent the percentage of students who agreed with the following.

There is a staff member at my school with whom I feel comfortable talking	82%
---	-----



MCKAMY MIDDLE SCHOOL

Home of the Knight
Flower Mound, Texas

Kelly Knight, Principal

