

Arbor Creek Middle School

Campus Profile

SCHOOL HOURS ONLINE

8:55 a.m. to 4:10 p.m. **GRADES** 6th through 8th grade

lisd.net/arborcreek | facebook.com/ArborCreekMiddleSchool | x.com/ArborCreekMS

STUDENT INFORMATION

896 Students
95.4% Average daily attendance

STAFF INFORMATION

69.6 Total staff members
12.5 Average number of years teaching experience
9.1 Average number of years teaching in LISD schools

PROFESSIONAL LEARNING

Total number of hours the staff spent developing their job skills last year

4440

53.5

Average professional learning hours per Lewisville ISD staff member



OBSERVATION

Number of administrator visits to observe class instruction

370

93 Average number of classroom visits per administrator

At Arbor Creek Middle School, we believe:

- All students can learn and are capable of high individualized achievement
- All students should learn in a safe, positive and supportive environment where diversity and individuality are respected and appreciated
- All students must be taught and encouraged to collaborate, think critically, apply knowledge, problem solve, communicate effectively and use technology as a tool for learning

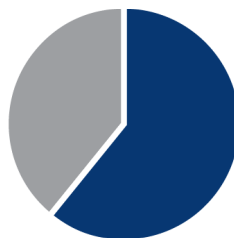
The Arbor Creek Middle School community will work together with trust and mutual respect to ensure academic success and responsible student involvement in our school, families and society. We will prepare our students to be innovative global thinkers, because at Arbor Creek, our students will enjoy thriving, productive lives in the future *they* create.



ACADEMIC PERFORMANCE

PSAT SCORES AND ADVANCED COURSES

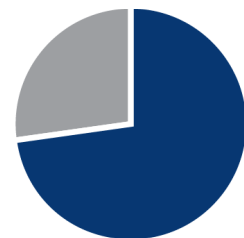
- = Percent of students whose PSAT test scores indicate they are college and career ready.
- = Percent of student population who are enrolled in at least one advanced course.



PSAT Reading **61%**



PSAT Math **47.3%**



Honors/AP enrolled **73%**

CLUBS

Clubs provide opportunities for students to learn beyond the classroom. Some of our clubs include Video gaming, book Battle, Pop Choir, UIL, National Junior Honor Society, Student Council, Circle of Friends, Arbor Creek Environmental Club, Fellowship of Christian Athletes, Archery Club, Library Book Club, Chess Club, and Makers Space.

DIGITAL CITIZENSHIP

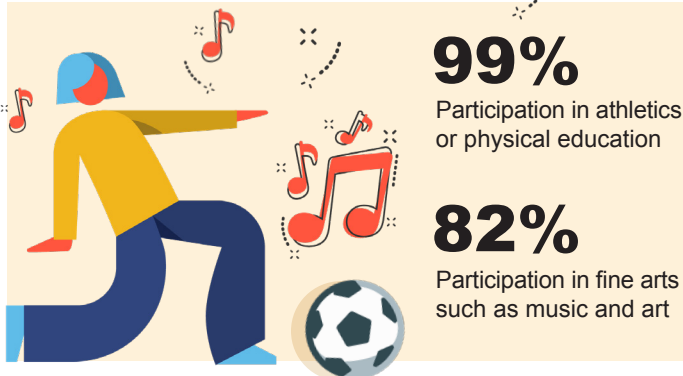
Earning the Common Sense School badge is a symbol of our school's dedication and commitment to helping students think critically and use technology responsibly to learn, create, and participate.



PROGRAMS

Our unique programs help our students become better learners, leaders, and friends. Some of these include Culinary Arts, Gifted and Talented, Special Education, English as a Second Language, Upper Levels of Spanish, Red Ribbon Week, Archery and Robotics.

ARTS AND ATHLETICS



AWARDS AND RECOGNITIONS

- Awarded Best 2C Middle School Band in Texas by TMEA
- Back-to-back State Archery Championships
- Band, Orchestra and Choir UIL Sweepstake awards (1st division superior ratings)
- ENERGY STAR Certified School
- Honors Band performance at Midwest Clinic in Chicago
- Numerous boys and girls athletic District Championships
- Superior art ratings at annual junior VASE
- Texas School Counselor Association CREST Award Winner
- WEB Program (Where Everyone Belongs)

Survey said...



What our parents think

In April 2024, parents were surveyed about the campus their child attends. Values represent the percentage of respondents who agreed with each statement. Based on 214 responses.

Are satisfied overall	97%
Most of the time, my child is happy at school	93%
My child's health and wellness are supported	95%
Parents feel welcomed at school and are involved	98%
School staff communicates well with families	96%
Teachers do whatever it takes to help my child meet academic standards	91%

What our students think

In April 2024, we asked our students about adults they could confide in at our school. Values represent the percentage of students who agreed with the following.

There is a staff member at my school with whom I feel comfortable talking	83%
---	-----



ARBOR CREEK MIDDLE SCHOOL

Home of the Eagles
Carrollton, Texas

Amy Obenhaus, Principal

